

- **ALL PRUNING WILL NEED TO BE ACCORDANCE WITH ANSI A300 PRUNING STANDARDS.**
- **THE NURSERY OWNED BY DWIGHT WILLIAMS LOCATED AT THE CORNER OF LELAND CREEK RD AND GRAHAM FARM RD WILL LIKELY BE INTERESTED IN ANY CHIPPINGS YOU WILL HAVE.**

Town Hall and nearby playground area-

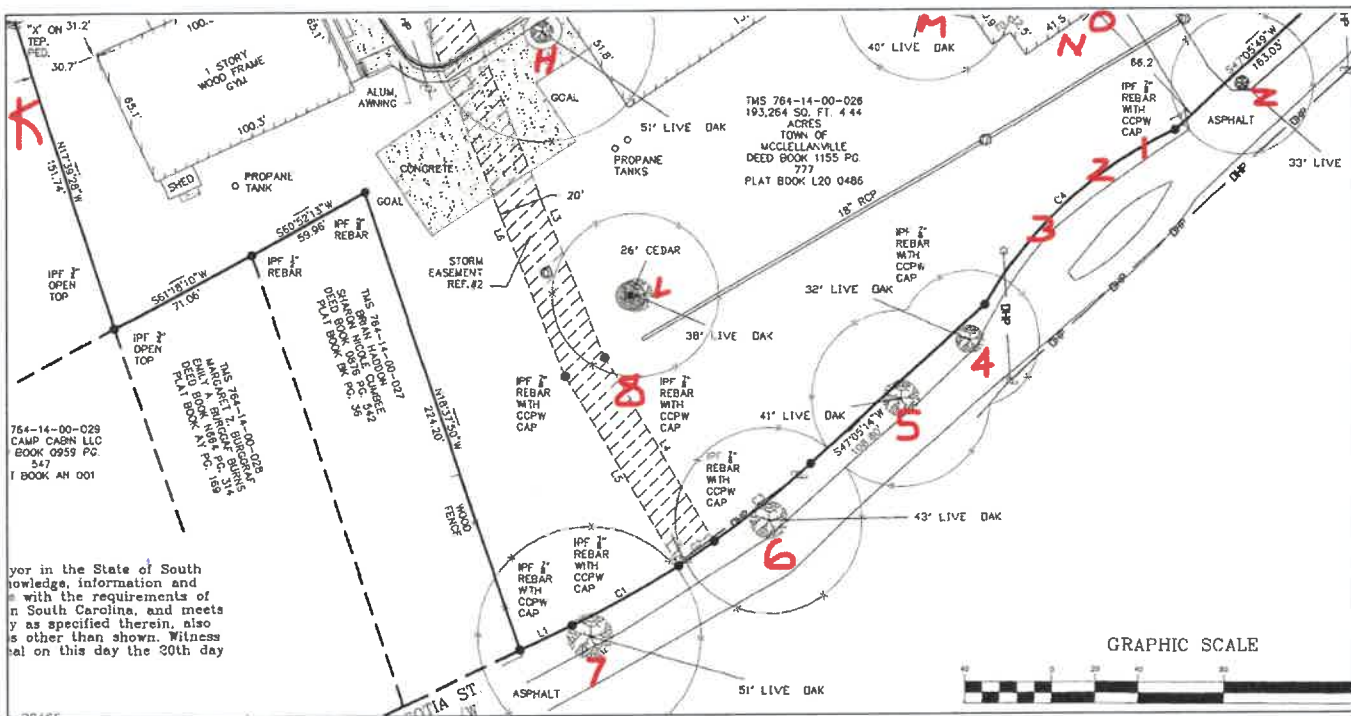
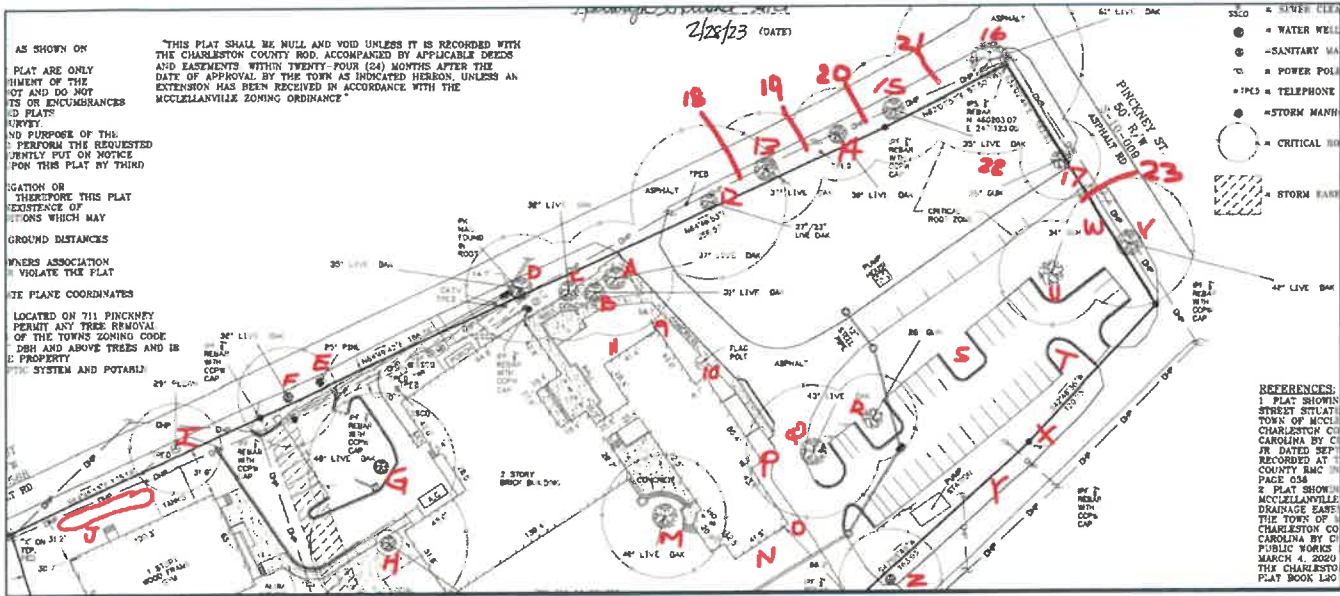
- 1) (green below) Remove dying bradford pear on road side of fence. Cut stump as low as possible and leave stump.
- 2) (orange below) Remove long, low stub limb that is growing toward play equipment.
(dotted orange area) Remove deadwood greater than 2" diameter over playground area.
- 3) (blue below) Remove dead ~9" live oak behind bldg.. Cut stump as low as possible and leave stump.
- 4) (orange/red below) Clearance prune off the bldg/roof for 10'-12' clearance. Photograph any damage to walls/facia/roof from limbs for Town to evaluate any future repair work. For vision pruning it may be best to see from inside to get better idea of needs. The first two sets of windows (front to back) on the creek side are the highest priority for this.
(dotted orange/red) Prune for improved views from creek side windows and bldg. mounted cameras. Many limb tips are growing downward and need to be cut back to horizontal or upright laterals or parent limbs. In some cases clearance for trucks and boats will require additional pruning. In some instances some minor thinning may be needed for windows or cameras. There are some old stubs left from prior, improper pruning cuts that need to be cleaned up. There is a large dia short stub that needs to be removed in the vicinity of the bottom stairs from the side door.



Middle School property-

- 1) Refer to green highlighted work on attached inventory sheet. Rough property boundary outline is below. The green highlighted items were prioritized over the other items so quote should only include the highlighted work.

MCVL School



Maintenance needs based upon 10/22/24 and 10/29/24 site visits

- A) 37" Live oak- Impacted by power lines. **Cut vines at base of trunk. Remove deadwood > 2" dia. Clearance prune over drive to 12' ht.**
- B) 31" Live oak- Impacted by power lines. **Cut vines at base of trunk. Clearance prune 10'-12' from roof, wall and/or gutters.**
- C) 32" Live oak- Impacted by power lines.
- D) 35" Live oak- Impacted by power lines. **Clearance prune over road for 12' clearance. Clearance prune for 8' clearance over ground. Clearance prune 10' from roof, wall and/or gutters.**
- E) 25" Live oak (shown on survey as pine)- **Clearance prune over road and drive for 12' clearance.**
- F) 32" Live oak- **Remove deadwood > 2" dia.**
- G) 48" Live oak- **Cut vines at base of trunk. Remove deadwood > 2" dia. Clearance prune over drive for 12' clearance. Clearance prune for 8' clearance over ground.**

- H) 51" Live oak- Cut vines at base of trunk. Clearance prune 10' from roof, wall and/or gutters. Remove deadwood ≥ 2 " dia.
- I) 29" pecan- Impacted by power lines. Remove deadwood ≥ 2 " dia.
- J) Tree form hollies and laurel oak- Clearance prune 8' from the roof, wall and/or gutter.
- K) Neighbor's encroaching live oak- Clearance prune for 12' clearance from roof, wall and/or gutters.
- L) 26" cedar and adjacent live oak- Clearance prune for 8' clearance over ground.
- M) 40" Live oak- Cut vines at base of trunk. Clearance prune for 12' clearance from roof, wall and/or gutters. Remove deadwood > 2 " dia.
- N) Grouping of volunteer oaks, cedar and Chinese privet- Cut and remove volunteer oaks which are 2"-6" dia trunks. Cut and remove all adjacent privet. Leave cedar.
- O) Cherry laurel- Clearance prune for 6' clearance from roof, wall and/or gutters. Remove deadwood > 1 " dia.
- P) Multi-stem crape myrtle- Clearance prune for 8' clearance from the roof, wall and /or gutters. No heading cuts shall occur and thus may lead to some entire stems being removed.
- Q) 43" Live oak- Remove lodged large dead limb. Remove deadwood > 2 " dia. Deadwood extensive in canopy.
- R) 28" sweet gum- Remove deadwood ≥ 2 " dia.
- S) Live oak in parking island- Clearance prune 9' over drive.
- T) Live oak in parking island- Clearance prune for 12' clearance over drive and parking spaces.
- U) 34" Sweet gum and cedars- Clearance prune 4 adjacent cedars for 9' clearance over parking space.
- V) 42" Live oak- Impacted by power lines. Cut vines at base of trunk. Remove deadwood ≥ 2 " dia.
- W) Live oak- Remove deadwood ≥ 2 " dia.
- X) Live oak- Clearance prune for 8' clearance over ground.
- Y) Live oak- Clearance prune for 8' clearance over ground.
- Z) 33" live oak- Clearance prune for 12' clearance over drive, but no limbs larger than 5" dia are to be cut unless reviewed and approved. Remove deadwood > 2 " dia.
- 1) Live oak- Clearance prune 12' over road, but no limbs larger than 6" dia are to be cut unless reviewed and approved. Clearance prune 8' over ground, but no limbs larger than 5" dia are to be cut unless reviewed and approved.
 - 2) Live oak- Clearance prune 12' over road, but no limbs larger than 6" dia are to be cut unless reviewed and approved.
 - 3) Live oak- Clearance prune 8' over ground, but no limbs larger than 5" dia are to be cut unless reviewed and approved.
 - 4) 32" Live oak- Cut vines at base of trunk and adjacent palmettos. Remove deadwood ≥ 2 " dia.
 - 5) 41" Live oak- Impacted by power lines. Cut vines at base of trunk. Remove deadwood ≥ 2 " dia.
 - 6) 43" Live oak- Impacted by power lines. Prune to create 6' clearance around street light. Selectively remove 2-3 limbs below light no larger than 1" dia below the light to improve light reaching the road/ground. Remove deadwood > 2 " dia.
 - 7) 51" Live oak- Impacted by power lines. Remove deadwood ≥ 2 " dia.
 - 8) Pecan- Cut vines at base of trunk. Remove deadwood ≥ 2 " dia.
 - 9) Cherry Laurel- Cut green briar at corner. Clearance prune 6' from the roof, wall and /or gutters. Clearance prune for 8' clearance over sidewalk.
 - 10) Multi-stem Crape Myrtle- Clearance prune 8' from the roof, wall and /or gutters. No heading cuts shall occur and thus may lead to some entire stems being removed. Correctly prune the low stub cut leader.
 - 11) Multi-stem black cherry- Remove all cherry stems and leave cast iron plants.
 - 12) 27"/23" Live oak- Impacted by power lines. Remove deadwood ≥ 2 " dia. Cut vines at base of trunk. Selectively remove 2-3 limbs about the crape myrtles to increase light and space for them however no limbs larger than 2" dia at or above the top of the crape myrtles.

- 13) 37" Live oak- Impacted by power lines. Remove deadwood ≥ 2 " dia.
- 14) 30" Live oak- Impacted by power lines. Remove deadwood ≥ 2 " dia.
- 15) 35" Live oak- Impacted by power lines. Cut vines at base of trunk. Clearance prune 6' over ground.
Remove deadwood ≥ 2 " dia.
- 16) 61" Live oak- Impacted by power lines. Remove deadwood ≥ 2 " dia.
- 17) 26" Sweet gum- Impacted by power lines. Remove deadwood ≥ 2 " dia. Cut sweet gum root sprouts
at base of trunk.
- 18) Crape myrtle- Impacted by power lines. Cut vines at base of trunk.
- 19) Crape myrtle- Impacted by power lines. Remove deadwood ≥ 2 " dia.
- 20) Crape myrtle- Cut vines at base of trunk.
- 21) ~12" laurel oak- Clearance prune 8' over ground.
- 22) ~11" live oak- Clearance prune 8' over ground.
- 23) Sweet gum- Remove deadwood ≥ 2 " dia. Cut vines at base of trunk and adjacent palmetto.



Other removals around town

1) Large 20"+ pine along Oak St- removal as well as stump grinding.



2) ~15" oak that is dead, right across Old Cemetery Rd from the CREECS school sign. Cut stump as close to ground as possible and leave stump.

At the oak street pine, both were made aware of the need to grind the pine stump. With this tree being on private property I would recommend getting something in writing from the owner of the land (McCarley I believe) stating his allowing the tree to be removed just to be on the safe side and also ease any potential concerns of whichever arborist gets the job. Otherwise there are potential property damage and trespass concerns and potentially insurance issues that the property owner could bring against the arborist or Town given the Town being the arborist's client but working on someone else's property. There is also a smaller live oak on the creek side of the pine which wasn't mentioned but assume it would come out as well with the drainage work at that time.





3) Dead ~8" live oak near edge of Kit Hall Road. Cut stump as close to ground as possible and leave stump.

